

Strebel S-ASX Technical Specifications

Model		30	35	40	45	50	
Efficiency label at 35°C ⁽¹⁾		A+	A+	A+	A+	A+	
Efficiency label at 55°C ⁽¹⁾		A+	A+	A+	A+	A+	
SCOP at 35°C		3.64	3.64	3.65	3.62	3.62	
SCOP at 55°C		2.87	2.86	2.86	2.86	2.86	
A7W35	Heating capacity	kW	29.2	34.4	38.6	44.1	50.4
	Power input	kW	6.32	7.48	8.40	9.59	11.0
	COP		4.62	4.60	4.60	4.60	4.58
	Water flow rate	l/h	5039	5923	6650	7602	8676
	Pressure drops	kPa	21	28	35	31	40
A7W45	Heating capacity	kW	29.6	34.8	39.1	44.6	51.0
	Power input	kW	8.07	9.54	10.7	12.12	14.0
	COP		3.67	3.65	3.65	3.66	3.64
	Water flow rate	l/h	5127	6013	6761	7716	8811
	Pressure drops	kPa	22	29	36	32	41
A7W55	Heating capacity	kW	30.0	35.3	39.7	45.4	51.7
	Power input	kW	9.89	11.6	13.1	15.0	17.1
	COP		3.03	3.04	3.03	3.03	3.02
	Water flow rate	l/h	3269	3846	4315	4936	5623
	Pressure drops	kPa	9	12	15	14	17
A7W65	Heating capacity	kW	30.7	36.1	40.5	46.3	53.0
	Power input	kW	12.3	14.5	16.2	18.6	21.3
	COP		2.50	2.49	2.50	2.49	2.49
	Water flow rate	l/h	2686	3158	3543	4051	4628
	Pressure drops	kPa	6	9	11	9	12
A2W35	Heating capacity	kW	24.7	29.0	32.6	37.2	42.5
	Power input	kW	6.32	7.46	8.36	9.55	11.0
	COP		3.91	3.89	3.90	3.90	3.86
	Water flow rate	l/h	4260	5005	5628	6425	7325
	Pressure drops	kPa	15	21	26	22	29
A2W45	Heating capacity	kW	25.1	29.5	33.1	37.8	43.2
	Power input	kW	8.06	9.52	10.7	12.12	14.0
	COP		3.11	3.10	3.12	3.10	3.09
	Water flow rate	l/h	4345	5109	5735	6552	7473
	Pressure drops	kPa	16	21	27	23	30
A2W55	Heating capacity	kW	25.6	30.1	33.7	38.6	44.1
	Power input	kW	9.91	11.6	13.0	14.9	17.1
	COP		2.58	2.59	2.59	2.59	2.58
	Water flow rate	l/h	2789	3280	3672	4206	4794
	Pressure drops	kPa	7	9	11	10	13
A2W65	Heating capacity	kW	26.3	31.0	34.7	39.7	45.3
	Power input	kW	12.4	14.5	16.2	18.6	21.2
	COP		2.12	2.14	2.14	2.13	2.14
	Water flow rate	l/h	2301	2712	3036	3473	3963
	Pressure drops	kPa	5	6	8	7	9
A-4W35	Heating capacity	kW	22.4	26.5	29.7	33.9	38.8
	Power input	kW	6.34	7.47	8.37	9.57	11.0
	COP		3.53	3.55	3.55	3.54	3.53
	Water flow rate	l/h	3879	4572	5126	5853	6685
	Pressure drops	kPa	13	17	22	19	24
A-4W45	Heating capacity	kW	22.9	27.0	30.3	34.6	39.6
	Power input	kW	8.08	9.53	10.7	12.2	14.0
	COP		2.83	2.83	2.83	2.84	2.83
	Water flow rate	l/h	3980	4675	5249	5996	6847
	Pressure drops	kPa	13	18	23	20	26
A-4W55	Heating capacity	kW	23.5	27.6	31	35.4	40.4
	Power input	kW	9.93	11.7	13.0	14.9	17.1
	COP		2.37	2.36	2.38	2.38	2.36
	Water flow rate	l/h	2561	3007	3378	3857	4402
	Pressure drops	kPa	6	8	10	9	11
A-4W65	Heating capacity	kW	24.3	28.6	32.1	36.7	41.8
	Power input	kW	12.2	14.6	16.3	18.6	21.3
	COP		1.96	1.96	1.97	1.97	1.96
	Water flow rate	l/h	2126	2502	2808	3211	3657
	Pressure drops	kPa	4	6	7	6	8

A7W65 = source : air in 7°C d.b. 6°C w.b. / plant : water in 55°C out 65°C
A7W55 = source : air in 7°C d.b. 6°C w.b. / plant : water in 47°C out 55°C
A7W45 = source : air in 7°C d.b. 6°C w.b. / plant : water in 40°C out 45°C
A7W35 = source : air in 7°C d.b. 6°C w.b. / plant : water in 30°C out 35°C
A2W65 = source : air in 2°C d.b. 1 °C w.b. / plant : water 55°C out 65°C
A2W55 = source : air in 2°C d.b. 1 °C w.b. / plant : water 47°C out 55°C

A2W45 = source : air in 2°C d.b. 1 °C w.b. / plant water 40°C out 45°C
A2W35 = source : air in 2°C d.b. 1 °C w.b. / plant water 30°C out 35°C
A-4W65 = source : air in -4°C d.b. -5°C w.b. / plant : water in 55°C out 65°C
A-4W55 = source : air in -4°C d.b. -5°C w.b. / plant : water in 47°C out 55°C
A-4W45 = source : air in -4°C d.b. -5°C w.b. / plant : water in 40°C out 45°C
A-4W35 = source : air in -4°C d.b. -5°C w.b. / plant : water in 30°C out 35°C

Strebel S-ASX 30-50 Technical Data

Model		30	35	40	45	50
Power supply	V-p-Hz	400 - 3N - 50				
Compressor type	Scroll with Vapour Injection (EVI)					
No. compressors/No. refrigerant circuits	Qty	1/1				
Plant heat exchanger type	Stainless steel brazed plates					
Source heat exchanger	Finned Coil					
Fans	Plug Fan					
No. fans	Qty	1				
Hydraulic fittings	1" 1/4 M					
Heat recovery	1" M					
Weight	kg	430	432	435	511	513
Maximum power input	kW	13.9	15.5	17.1	21.6	24.5

Low Noise Acoustic Setting

		30	35	40	45	50
Sound power level	dB(A)	72	73	73	74	74
Sound pressure at 1 metre	dB(A)	56	57	57	58	58
Sound pressure at 5 metres	dB(A)	46	47	47	48	48
Sound pressure at 10 metres	dB(A)	41	42	42	43	43

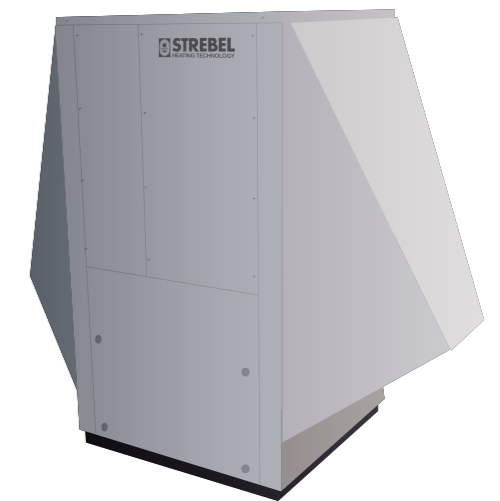
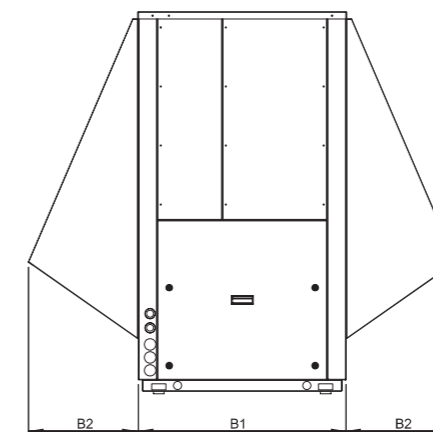
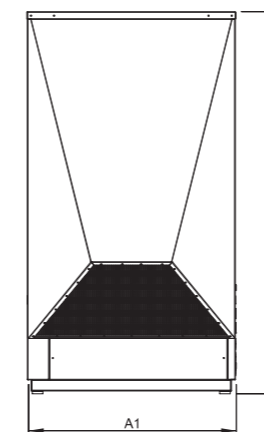
Dimensions

		30 / 35 / 40	45 / 50
A1	mm	1180	1480
B1	mm	880	880
B2	mm	465	465
H	mm	1620	1620

The acoustic data performances are referred to units operating in heating mode at nominal conditions A7W35.

The sound power level is measured in accordance to ISO 3744 standard.

The sound pressure level is calculated according to ISO 3744 and is referred to a distance of 1/5/10 metres from the external surface of the unit.



The values are referred to units without options and accessories.

COP (Coefficient Of Performance) = ratio of the total heating capacity to the effective power input of the unit
All COP data in accordance with EN 14511 ⁽¹⁾ In accordance with European regulation 811/2013

The company reserves the right to change the specifications and dimensions without prior notice. E.&O.E.